



## Background to organisation

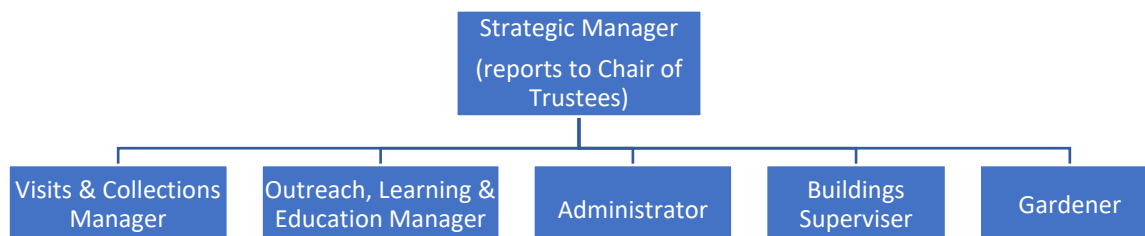
Epworth Old Rectory is the childhood home of John and Charles Wesley, the founders of Methodism, a global movement of approximately 80 million people. It is a Grade I listed building, a Queen Anne period house, built in 1709 with later additions. An Accredited Museum, it has an extensive collection, including a unique collection relating to Methodist women.

Since 1954, Epworth Old Rectory (EOR) has been held on trust by the Methodist Church of Great Britain on behalf of the World Methodist Council. It has been open to the public since 1957 and before 2020 attracted over 5,000 visitors a year. It is a place of pilgrimage for Methodists from all over the world. It is one of four major Methodist heritage sites in Britain, the development of which is co-ordinated by the national Methodist Heritage Committee of the Methodist Church.

The EOR Trustees are appointed by the national Methodist Conference and include British and international representatives of the global Methodist Church.

Since 2016, a Charitable Incorporated Organisation (CIO), comprising Trustees and additional volunteer directors, has administered the affairs of EOR on behalf of the Trustees.

## Staff structure



## Our Statement of Purpose

As an organisation, Epworth Old Rectory seeks to inspire and educate present and future generations through the interpretation of the life of Susanna Wesley & her family. This will be done by:

- Providing an excellent visitor experience and making the site accessible to as wide an audience as possible
- Preserving, caring for the fabric of the historic building and giving access to our collections



- Ensuring that we are resilient and able to meet the challenges that the future will bring in order to be relevant to future audiences
- Ensuring that we remain financially secure – both in the short and the long term.

### **Our Vision**

To be the centre of excellence for celebrating and studying the stories of Methodist women.

### **Our Mission**

Setting, developing and maintaining the vision and mission of the Old Rectory as a place of Christian pilgrimage, learning and inspiration for all; a museum dedicated to the influence of the Wesley family on faith, social justice, worldwide Methodism and all people today, whether they are of any religion or none.

### **Our Values**

Excellence; Inspiration; Inclusivity; Transformation.

### **Our Objectives**

#### Inspiring

- Telling the story of this place
- Celebrating Susanna Wesley and her legacy and influence today
- Raising awareness of the Old Rectory's spiritual significance, especially as a place of Pilgrimage
- Offering motivational education programmes
- Developing imaginative modes of interpretation, using exhibitions, costumes, drama, music, crafts and food
- Developing and increasing use of contemporary communications, especially social media
- Researching and sharing the stories of Methodist women and women's movements

#### Conserving

- Maintenance of the Old Rectory, its ancillary buildings, garden and grounds to a high standard
- Caring for our collections to appropriate professional standards
- Researching and sharing the history of the house and the stories of the Wesley family

#### Sustaining

- Seeking regular income from grants and developing relationships with funders
- Reporting as required to the Charity Commission and Methodist Heritage Committee
- Maximising income from the Rectory's trading activities (shop & catering)
- Maintaining Accredited Museum status
- Maintaining a volunteer body, including those with specialist skills
- Approaching national funders for major projects
- Encouraging and responding to visitor feedback